

# STUDIO & LOCATION FRESNELS std series

## PRODUCT DESCRIPTION

### FRESNEL EROS 300W

MODEL 50-01  
LENS 88 MM / BASE GY9.5

LOCATION AND STUDIO FRESNELS OFFER STYLE, DURABILITY, PERFORMANCE AND EFFICIENCY. IDEAL GENERAL PURPOSE KEYLIGHT AND BACKLIGHT FOR TELEVISION STUDIOS AND MOTION PICTURE.

- Front and back focusing. Worm drive mechanism for focusing.
- Thermal shock resistant borosilicate fresnel lenses.
- New easy running barndoor ears.
- Superior optical performance with specially designed reflectors.
- Tubular steel yokes
- Safety screem.
- Easy to service and maintain.

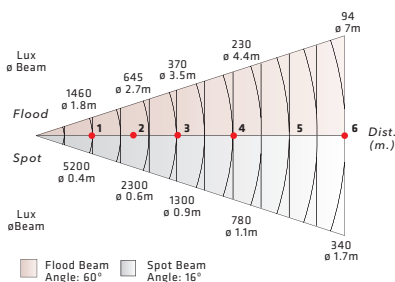


#### ACCESSORIES FRESNEL EROS



#### PHOTOMETRIC DATA

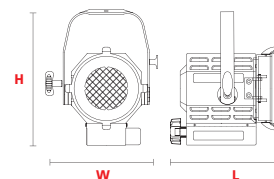
EROS With lamp CP81 300w 220v



#### DIMENSIONS

FRESNEL EROS 300W 50-01

- L** 185mm (7.28")
- W** 195mm (7.68")
- H** 230mm (9.06")
- Weight** 2.7kg (5.9 Lbs)
- Size** 240x250x280mm (9.45"x9.84"x11.02")



#### LAMPS

ANSI COD.	LIF COD.	BRAND	WATTS	V	SOCKET	LIFE HS	K°
FLS	CP81	CP81 Thorn	300	220	GY9.5	150	3200
FKW	CP81	FKWGE	300	120	GY9.5	150	3200

#### SUPPLIED WITH

- 88 mm Fresnel lens.
- 4 leaf rotating barndoor.
- Color frame.
- GY9.5 lampholder.
- Safety grid.
- In-line switch (additional).
- 2 m Power supply cable.